

Accessibility Guide

FREE



Visit *South Somerset*



Download your free copy at visitsouthsomerset.com



VisitSouthSomerset



VisitSSomerset



visitsouthsomerset



Contents

- 1. Supporting Additional Needs**
- 2. Transport**
- 3. Accessible Places To Visit**
- 4. The Great Outdoors**
- 5. Additional Information**

South Somerset is a wonderful place to visit for everyone of all ages and abilities.

To help you plan your accessible break in South Somerset, we've put together this information that we hope will help make things as easy as possible for you.

1. Supporting Additional Needs

Many of our brochures, guides and leaflets contain the practical information on accessibility, travel, parking and visitor facilities to help make your visit as easy as possible. You will find a selection of these and some useful trails to download on our website.

A much wider selection is also available in print from our South Somerset Visitor Information Centre at Cartgate Picnic Site on the A303 at Stoke sub Hamdon.

If you have specific enquiries relating to your stay, our information centre will be very happy to help.

 01935 829333

 www.visitsouthsomerset.com

 VisitSS@Somerset.gov.uk

Accessible & Additional Needs Accommodation

We list a wide variety of accommodation on our website. Please browse the STAY section on our website and check the facilities and features for your needs. Please call the accommodation directly for detailed information.

 www.visitsouthsomerset.com

Particularly useful websites for specialist and accessible accommodation are listed below.

 www.disabledholidays.com

 www.tourismforall.org.uk

1. Supporting Additional Needs

Mobility in South Somerset

You may need extra help to get around on your break and here in South Somerset we have the following mobility hire companies that can help you. It's also worth noting that some of the attractions do hire out wheelchairs and more robust trampers are available at Ham Hill Country Park and some of the gardens (bookable in advance). Please check directly with the individual sites for up-to-date detailed information. Shopmobility Yeovil is a scheme providing manual and powered scooters to enable people with limited mobility to shop and use other leisure facilities in Yeovil. Transportable equipment is also available for hire.

 www.yeovilshopmobility.co.uk

Wheelchairs are available to borrow and hire from the British Red Cross.

 www.redcross.org.uk/get-help/borrow-a-wheelchair

Disabled Toilets

There are a number of accessible WC facilities in the Somerset area and you can find them on the website below:

 www.somerset.gov.uk

The South Somerset Visitor Information Centre at Cartgate Picnic Site sells RADAR keys for access to disabled toilets nationwide.

In addition, Changing Places are toilet and changing facilities for the disabled with restricted mobility. Further information on these facilities in South Somerset can be found on the website below:

 www.changing-places.org

2. Transport



Details and help planning transport routes in South Somerset can be found at Traveline South West.

 0871 200 2233

 www.travelinesw.com

Bus Services

The main bus companies in South Somerset are First Bus and South West Coaches. Timetables are available to download.

 www.firstbus.co.uk

 www.southwestcoaches.co.uk

Slinky Bus

Operates a demand-responsive bus service in the Chard and Ilminster and Martock and South Petherton area. Full details can be found online.

 www.travelsomerset.co.uk/slinky-services-demand-responsive-transport

2. Transport

Berrys Coaches

Operates a twice-daily London Superfast Service from Taunton to London Hammersmith with local stops at Ilminster, South Petherton, Yeovil, Ilchester and Wincanton. Wheelchair accessible coaches are available but booking online in advance is essential.

Berrys also offer a day excursions and a short breaks programme.

We can also help you with bookings at our South Somerset Visitor Information Centre.

 www.berryscoaches.co.uk

National Express

Operates local and national coach services. Discount Disabled Coachcards are available. For details regarding accessibility visit the website below.

 www.nationalexpress.com

 www.nationalexpress.com/en/help/accessibility

Rail

South Somerset has excellent rail links across the country. For timetables visit the National Rail website. Discounted Disabled Railcards are available.

 08457 484950

 www.nationalrail.uk

 www.disabledpersons-railcard.co.uk

Heart of Wessex Line

Calling at Castle Cary, Bruton and Yeovil, the famously scenic Heart of Wessex Line runs from Bristol to Weymouth. The services along the Heart of Wessex Line are operated by Great Western Railway (GWR).

 0345 7000125

 www.scenicrailbritain.com/lines/heart-wessex-line

Taxis

The following taxi companies have vehicles suitable for accessibility and additional needs:

In and near Castle Cary & Wincanton:

Destination Travel

Earl Cottages, Lawrence Hill, Wincanton, BA9 8AB

 01963 34266

 www.destination-travelwincanton.co.uk

2. Transport

In and near Crewkerne:

Freeway Taxis

32 Lampreys Lane, South Petherton, TA13 5DU

 07725 082176

In and near Langport, Martock & Ilminster:

BW Private Hire

18 Bowden Business Centre, Hambridge, Langport, TA10 0BP

 01458 250511

 www.bwprivatehire.com

In and near Yeovil:

Radio Cabs

30a Middle Street, Yeovil, BA20 1LY

 01935 426666

 www.yeovilradiocabs.co.uk

JNC Travel

24 Hawthorn Road, Yeovil, BA21 5PQ

 01935 706706

 www.yeoviltaxi.co.uk

Colemans/South West Car Hire (Chauffered) Ltd

193 Ilchester Road, Yeovil, BA21 3BQ

 01935 706706

Parking for Blue Badge Holders

For all the information about parking with your blue badge, please refer to your booklet that would have been issued with the badge. We encourage you to check the on street signs for any restrictions that may be in place when visiting our area.

For a full list of car parks in the area, visit the website below.

 www.somerset.gov.uk

A useful town guide of Yeovil is also available to download for free. See website below.

 www.yeovil.gov.uk

3. Accessible Places To Visit



3. Accessible Places to Visit

South Somerset offers many things to see and do with varying levels of accessibility. Some of the attractions have specially adapted mobility transport to help you explore their gardens and landscapes; all the information you need to plan your visit can be found on their website, on their accessibility statement or by calling them in advance.

We have listed just a few suggestions that our visitors with restricted mobility and additional needs have particularly enjoyed...



Free entry

Parking fees may apply. Donations where appropriate at discretion.

Attractions, Gardens & Experiences

ACEarts

The Old Town Hall, Market Place, Somerton, TA11 7NB

Gallery showcasing contemporary craft and art alongside an inspiring exhibition programme of work by local and national artists.



01458 273008



www.acearts.co.uk



Barrington Court (National Trust)

Barrington, Nr Ilminster, TA19 0NQ

An atmospheric fragment of old Somerset: an empty Tudor manor house, beautifully restored in the 1920s, with farm buildings, abundant flowers and orchards. Gift shop and café.



01460 241938



www.nationaltrust.org.uk/visit/somerset/barrington-court

3. Accessible Places to Visit

Chard & District Museum

Godworthy House, High Street, Chard, TA20 1QB

The museum exists to help today's community uncover yesterday's heritage, history and hidden stories. The collection dates from around 1880. Exhibits tell the story of the town and there are significant displays on notable people with connections to the town including John Stringfellow, who with another local man William Samuel Henson achieved the first powered flight in 1848, in a disused lace factory, with a 10 foot (3m), steam driven flying machine. Partial disabled access.

 01460 65091

 www.chardmuseum.co.uk

Coates English Willow, Willows & Wetlands Visitor Centre



Stoke St Gregory, Taunton, TA3 6HY

Willow is as traditional to Somerset as cheese and cider although perhaps not so much is known about it. At the Visitor Centre the Coate family has thoughtfully put together displays and collections to tell the fascinating story of willow.

Willow and wetland walks, craft studios, basket museum, guided tours and regular willow workshops. Café. Partial disabled access. Paid entry to the museum.

 01823 490249

 www.coatesenglishwillow.co.uk

Crewkerne & District Museum & Heritage Centre



The Heritage Centre, Market Square, Crewkerne, TA18 7LP

Crewkerne has a long and interesting history. It once had the status of being a Saxon royal mint, was an important stopping place for travellers and its thriving textile industry brought prosperity. Founded in 1988, the museum illustrates these things, but equally shows how ordinary local people lived and worked at various periods. Free entry, donations welcome.

 01460 77079

 www.crewkernemuseum.co.uk

Dawe's Twineworks



94 High Street, West Coker, BA22 9AU

Explore the only surviving Victorian Twineworks with original working machinery. 10am to 4pm, fourth Saturday of each month, or by appointment. Groups welcome.

 01935 862938

 www.westcoker.net/home-page/ropewalk

3. Accessible Places to Visit

East Lambrook Manor Gardens

South Petherton, TA13 5HH

Gardening legend Margery Fish's quintessential English cottage garden. A beautiful plantsman's paradise and specialist nursery. Gift shop and café. Partial disabled access.

 01460 240328

 www.eastlambrook.com

East Somerset Railway

Cranmore Railway Station, Cranmore, Shepton Mallet, BA4 4QP

The East Somerset Railway, is a small but characterful railway running through the Mendip Hills near Shepton Mallet. The train journey takes approximately 40 minutes over the five mile round trip. The David Shepherd Discovery Centre explains the history of the railway and you can visit the engine shed and workshop and see restoration work in progress. Museum and miniature railway. Shop. See the website for timetable.

 01749 880417

 www.eastsomersetrailway.com

Ferne Animal Sanctuary

Chard, TA20 3DH

Set in 72 acres of stunning countryside the Sanctuary is a great place to come and explore! Ferne was set up through the foresight of a local lady – the late Nina, Duchess of Hamilton & Brandon – who realised that men and women going off to war had no-one to take care of their animals so would require a temporary refuge for them. The Duchess put a call out on the BBC and legend has it that when she returned to her London home there were a number of cats and dogs on her doorstep and also a parrot! The need for caring and rehoming animals continues at Ferne. There are over 300 resident animals to see. Visitor Centre and café.

 01460 65214

 www.ferneanimalsanctuary.org/visit-the-sanctuary

Fleet Air Arm Museum

RNAS Yeovilton, Ilchester, BA22 8HW

A major attraction in South Somerset and a great place for a day out. You'll fly by helicopter to the replica of the aircraft carrier HMS Ark Royal. You'll experience the thrills and sounds of a working flight deck and even see a nuclear bomb! You can go on-board the first British built Concorde and see the largest collection of Naval aircraft anywhere in Europe. Restaurant, shop, adventure playground. Excellent disabled facilities. Ample free parking.

 01935 840565

 www.nmrn.org.uk/visit-us/fleet-air-arm-museum

3. Accessible Places to Visit



3. Accessible Places to Visit

Forde Abbey & Gardens

Chard, TA20 4LU

Thirty acres of glorious gardens surrounding a magnificent 12th century monastery. Seasonal interest all year round. Gift shop, plant nursery and café.

 01460 221290

 www.fordeabbey.co.uk



Gartell Light Railway

Common Lane, Yenston, Templecombe, BA8 0NB

Two foot narrow guage railway along the old Somerset and Dorset railway line. Train rides, restaurant, picnic area and caravan site. Please check the website for latest information and timetable.

 01963 370752

 www.newglr.weebly.com

Great Bow Wharf

Bow Street, Langport, TA10 9PN

Pop up gallery supporting local and regional artists showcasing their work, skills and talent. Cafe, Kitchen at the Wharf.

 01458 254257

 www.greatbow.org.uk



Greylake Nature Reserve (RSPB)

A361, Bridgwater, TA7 9BP

Spring stronghold and winter haven of waders. View raptors gliding above, while wandering the reed bed loop. Trails and hides.

 01458 252805

 www.rspb.org.uk/reserves-and-events/reserves-a-z/greylake



Hauser & Wirth Somerset

Durslade Farm, Dropping Lane, Bruton, BA10 0NL

A pioneering world-class gallery and multi-purpose arts centre which acts as a destination for experiencing art, architecture and the remarkable Somerset landscape through new and innovative exhibitions of contemporary art. An impressive landscaped garden, designed by internationally renowned landscape architect Piet Oudolf, sits behind the gallery buildings. Roth Bar & Grill restaurant.

 01749 814060

 www.hauserwirth.com/locations/10068-hauser-wirth-somerset





Photo credit: Brian Mounsher

3. Accessible Places to Visit

Haynes International Motor Museum

Sparkford, BA22 7LH

Explore the UK's largest collection of cars and motorbikes from around the world. Packed with over 400 beautiful and historic supercars. Gift Shop and café. Advance discount tickets available from South Somerset Visitor Information Centre. Tickets valid for 12 months.

 01963 440804

 www.haynesmuseum.org

Hestercombe Gardens

Cheddon Fitzpaine, Taunton, TA2 8LG

Explore 50 acres of beautiful gardens, steeped in history and brimming with wildlife. Woodland walks and a restored watermill. Gift shop, café and restaurant.

 01823 413923

 www.hestercombe.com

Lytes Cary Manor (National Trust)

Nr Somerton, TA11 7HU

This intimate medieval house, once home of a Tudor herbalist, was lovingly restored in the early 20th century, when its magical garden was created. Riverside walks and trails, children's play area. Gift shop and café. Partial disabled access.

 01458 22 4471

 www.nationaltrust.org.uk/visit/somerset/lytes-cary-manor

Montacute House (National Trust)

Montacute, Nr Yeovil, TA15 6XP

Once seen, never forgotten; the first glimpse of this golden Elizabethan masterpiece, glittering with windows and bristling with chimneys, is breathtaking. Gift shop and café.

 01935 823289

 www.nationaltrust.org.uk/visit/somerset/montacute-house

Muchelney Abbey (English Heritage)

Muchelney, Langport, TA10 0DQ

Discover monastic life at Muchelney, where you can see the Tudor abbot's house and foundations of a Benedictine abbey.

 0370 333 1181

 www.english-heritage.org.uk/muchelney

3. Accessible Places to Visit

Perry's Cider Mills

Iminster, TA9 0NY

Our countywide tradition of cider making is evident in many beautiful orchards that pepper the landscape. Visit the small museum housed in the original 16th century thatched cider barn, taste and treat yourself to the award-winning cider in the superb on site local farm shop. Partial disabled access.

 01460 55195

 www.perryscider.co.uk

Priest's House (National Trust)

Muchelney, Langport, TA10 0DQ

This medieval hall/house built in 1308 for the parish priest, has been little altered since the early 1600s. Please note the house is tenanted so please check the website for opening hours. Partial disabled access.


 01458 253771

 www.nationaltrust.org.uk/visit/somerset/priests-house-muchelney

Sherborne Castle & Gardens

New Road, Sherborne, DT9 5NR

A fascinating castle covering 400 years of history set in beautiful landscaped gardens. Discover walks around the lake to garden features such as Raleigh's Seat and the Cascade and Fossil House. Other walks take you to the courtyard garden, the Ginkgo Lawn and Orangery, the boathouse and pier where there are wonderful views of the old castle ruins. Gift shop and café.

 01935 813182

 www.sherbornecastle.com

South Somerset Heritage Collection

7 Artillery Road, Yeovil, BA22 8RP

Have you ever wondered where objects are stored? Visit by appointment to see anything from gloves, industrial machinery and paintings, to poison bottles and guns. Telling the story of Yeovil and South Somerset, SSHC gives you a rare opportunity to go behind the scenes and explore a museum store. Traditionally Yeovil has had a rich past of industry and has an important role to play in the history of South Somerset. SSHC's collections reflect this and range from an extensive photo archive, local history, archaeology and even an internationally significant firearms collection. SSHC was previously known as Community Heritage Access Centre (CHAC). Partial disabled access.

 01935 462855

 www.visitsouthsomerset.com/SSHC

3. Accessible Places to Visit

Stoke Sub Hamdon Priory (National Trust)

North Street, Stoke sub Hamdon, TA14 6QP

Complex of buildings from the 1300s-1400s, formerly used as a priest's residence. Check website for opening hours.

 01935 823289

 www.nationaltrust.org.uk/visit/somerset/stoke-sub-hamdon-priory



Photo credit: John Crispin

Swell Wood Nature Reserve (RSPB)



A378, Taunton, TA3 6PX

An ancient oak woodland extending to 10 miles (15km) along a ridge. Nature trails and bird hide. Fantastic views over the Somerset Levels. Spot roe deer, woodland birds and butterflies. Hear a cacophony of nesting herons. Heronry hide.

 01458 252805

 www.rspb.org.uk/reserves-and-events/reserves-a-z/swell-wood

The Bishop's Palace & Gardens

Wells, BA5 2PD

Explore 14 acres of beautiful gardens located in the heart of the historic city of Wells. Formal Dutch gardens and fine specimen trees with diverse and luxuriant borders, complete with restored 19th century picturesque style planting surrounding the Palace and the ruins of the Great Hall. Café.

 01749 988111

 www.bishopspalace.org.uk

The Newt in Somerset

Bruton, BA7 7NG

Ab ovo usque ad malus is Latin for 'From the egg to the apple' or 'From start to finish' as in hors d'oeuvre to desert. This phrase was the inspiration to create an historical timeline for the estate, with individual gardens and landscapes shaped by ideas, skills and traditions from past to present. Only plants and trees authentic to the period are grown in each garden – though sometimes with a modern twist. Roam the estate and you'll travel through two thousand years of history. Farm shop with estate produce and the finest traditionally made foods. Garden Museum. Treetop walkway and deer park. Restaurant and cyder bar/café. Gift shop. Roman Villa Experience (pre-booking essential)

 01963 577777

 www.thenewtinsomerset.com

3. Accessible Places to Visit

The Walled Gardens of Cannington

Church Street, Cannington, Nr Bridgwater, TA5 2HA

Fascinating gardens with a Grade 1 listed medieval priory backdrop. A mix of classic and modern features, including a 'hot' herbaceous border, sub-tropical walk and a national collection of deschampsia and santolina. Home to Somerset's only botanical glasshouse featuring species from around the world. Specialist plant nursery. Gift shop. Tearoom.

 01278 655042

 www.btc.ac.uk/the-college/open-to-the-public/the-walled-gardens-of-cannington/

Tintinhull Garden (National Trust)

Farm Street, Tintinhull, Nr Yeovil, BA22 8PZ

Secluded and harmonious, this exquisite garden was the vision of one remarkable woman: Phyllis Reiss. Partial disabled access.

 01458 224471

 www.nationaltrust.org.uk/visit/somerset/tintinhull-garden

West Somerset Railway

The Railway Station, Minehead, TA24 5BG

The Railway Station, Minehead, TA24 5BG

The longest standard gauge heritage railway in the UK, the West Somerset Railway, runs between Bishops Lydeard just outside the county town of Taunton all the way to Minehead. The 20.5 mile track, supported by ten stations, gives ringside views of cottages, churches, grazing cattle and coastal communities. A busy programme of events throughout the year includes chances to see Santa, snowdrops, gardens and visiting engines. There are even courses for budding drivers. Please check website for latest events and timetables

 01643 704996

 www.west-somerset-railway.co.uk

Wincanton Racecourse

Wincanton, BA9 8BJ

Home of the Badger Chase and Kingwell Hurdle, Wincanton Racecourse is surrounded by beautiful Somerset countryside and hosts many jump racing fixtures each year.

 0344 579 3014

 www.thejockeyclub.co.uk/wincanton

3. Accessible Places to Visit



World Horse Welfare Glenda Spooner Farm Kingsdon, Somerton, TA11 7YA

Home to around 65 horses at any one time. Meet the horses and ponies. Learn about the work of World Horse Welfare and the rehabilitation programme. The farm sits in 220 acres of unspoilt countryside and there are many opportunities to spot wildlife around the lake. Admire the amazing views. Walk the paddock trail and meet the ponies. Café.

Pre-booking essential

 01935 841442

 www.worldhorsewelfare.org/visit-us/events/visit-glenda-spooner-farm

Yeovil Railway Centre

Yeovil Junction Station, Yeovil, BA22 9UU

The Centre was formed in 1994 to preserve the original Southern Railway turntable installed in the late 1940s and to provide facilities for main line steam. Since then the turntable has been overhauled and visitors can watch, from a special viewing platform, the spectacle of large steam engines being turned and serviced when they call at Yeovil Junction. An Andrew Barclay steam engine 'Lord Fisher' is currently operational and provides the power for public rides on the demonstration line of approximately a third of a mile. Visitors ride either in a historic brake van or in a coach. There are several industrial diesels on site. Special Events (including Model Railway, Tractors and Halloween and Santa Specials) operate on a regular basis. Visitor Centre and café. See the website for more details.

 01935 410420

 www.yeovilrailway.freeservers.com

Yeovil Recreation Centre

Chilton Grove, Yeovil BA21 4AW

Fantastic recreation green space, with many flat paths and walkways. Great outdoor sports facilities including an athletics arena, artificial grass pitch, football pitches, golf courses, tennis courts and flagship play space. Dog-friendly Rec Café open 7 days a week.

 01935 462616

 www.yeovilrec.co.uk

3. Accessible Places to Visit

Entertainment & Leisure

Cineworld

Yeo Leisure Park, Old Station Way, Yeovil, BA20 1NP

Multiplex cinema.

 0330 333 4444

 www.cineworld.co.uk

Ilminster Arts Centre at The Meeting House

35 East Street, Ilminster, TA19 0AN

Arts Centre with a vibrant programme of art exhibitions, workshops and music performances.

 01460 54973

 www.ilminsterartscentre.com

The David Hall

Roundwell Street, South Petherton, TA13 5AA

The small hall with the big reputation! Concerts, theatre and film.

 01460 240340

 www.thedavidhall.org.uk



The Octagon Theatre

Hendford, Yeovil, BA20 1UX

Modern theatre and visual arts gallery hosting drama, dance, music and an annual pantomime.

 01935 422884

 www.octagon-theatre.co.uk

The Swan Theatre

138 Park Street, Yeovil, BA20 1QT

An outstanding example of non-professional theatre produced professionally. Partial access.

 07500 376031

 www.swan-theatre.co.uk

Westlands Entertainment Centre

Westbourne Close, Yeovil, BA20 2DD

Hosting activities such as exercise and dance classes, food and drink fairs, film and music.

 01935 422884

 www.westlandsyeovil.co.uk

3. Accessible Places to Visit

Leisure Centres

Chard Leisure Centre

Fore Street, Chard TA20 1GR

Built as part of the Chard Regeneration Programme, the Chard Leisure Centre provides families, sports clubs and gym-goers alike access to the latest amenities at the newest leisure facility in South Somerset. Swimming pool, a beginner's pool, children's soft play area, gym, fitness classes and a fantastic virtual cycling studio. Cafe.



01460 315007



www.freedom-leisure.co.uk/centres/chard-leisure-centre/

Crewkerne Aqua Centre

Henhayes Lane, Crewkerne, TA18 7LZ

A high quality facility conveniently located in the town centre with indoor swimming pool.



01460 77665



www.aquacentre.co.uk

Goldenstones Leisure Centre

Brunswick Street, Yeovil, BA20 1QZ

Leisure centre and indoor pool tucked away in the folds of Yeovil Country Park.



01935 845888



www.freedom-leisure.co.uk/centres/goldenstones-leisure-centre

Mill on the Brue

Trendle Farm, Bruton, BA10 0BA

Mill on the Brue, Somerset's award winning outdoor activity centre Mill on the Brue is open all year. Week, weekend, residential or day camps available providing exciting activities and challenging outdoor pursuits and studies including environmental course for all ages. Partial disabled access. Booking essential.



01749 812307



www.millonthebrue.co.uk

4. The Great Outdoors



4. The Great Outdoors

Our Green Flag award-winning sites have excellent easy access walking trails. Leaflets are available from each site, our South Somerset Visitor Information Centre at Cartgate Picnic Site and to download from our website.

 www.visitsouthsomerset.com



Ham Hill Country Park



Ham Hill Road, Stoke sub Hamdon, TA14 6RW

Offering incredible views of the South Somerset Moors, Exmoor and the Mendip Hills, Ham Hill is a 427 acre country park centred on an Iron Age hill fort. Green Flag award winner. A popular spot for scenic dog walks. Pub.

For people wanting to explore the countryside but with limited mobility, Ham Hill Country Park has an off-road mobility vehicle available for hire called a 'tramper'. The Tramper is designed to travel over rugged terrain, and over long distances. Anyone over the age of 16 can hire the Tramper for free. Please be aware that the Tramper needs to be booked at least 48 hours in advance and is only available during the rangers' key time of work, which is from Monday to Friday, 8.00am - 4.00pm.

If you would like to hire the Tramper, please phone the Ham Hill Office. Download Ham Hill's Easy Accessibility Trail from the website.

 01935 823617

 www.visitsouthsomerset.com/ham-hill



Yeovil Country Park



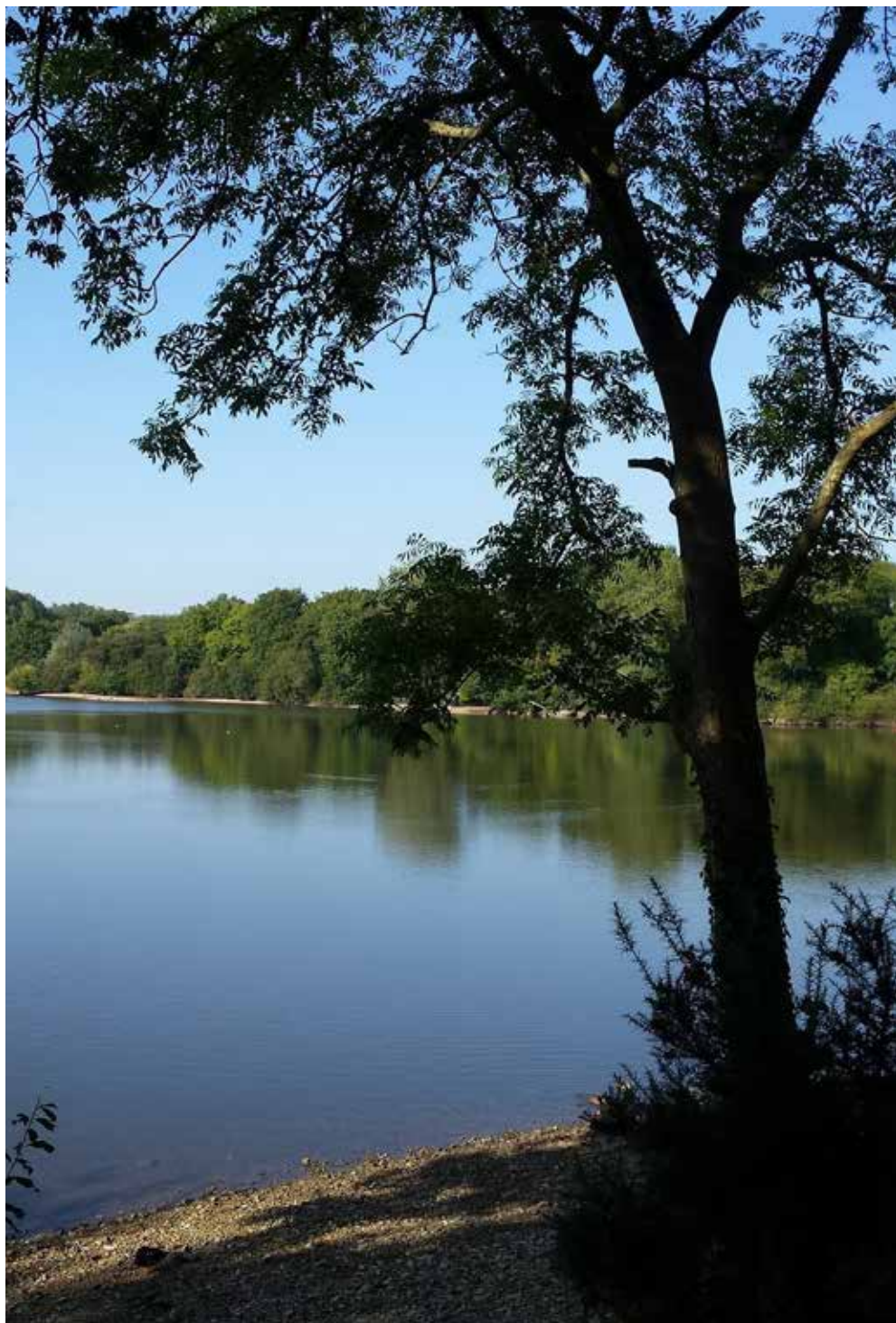
Brunswick Street, Yeovil, BA20 1QZ

Discover meadows, woodlands, a river and a lake teeming with wildlife on accessible routes taking you along the old railway line in this Green Flag award-winning country park. A children's play area and Ninesprings Café are conveniently situated along these routes. Download our Easy Access Trail guide from our website.

 0300 123 2224

 www.visitsouthsomerset.com/yeovil-country-park

4. The Great Outdoors



4. The Great Outdoors



Chard Reservoir Nature Reserve



Car park situated at the end of Oaklands Avenue, Chard, TA20 1HU

Peaceful countryside site of 88 acres - orchid meadows, native woodlands and excellent bird watching on open water from hide. Surfaced pathways take you through the meadows to the woodland and water's edge. Green Flag award winner. Partial disabled access.

 0300 123 2224

 [www.visitsouthsomerset.com/
chard-reservoir](http://www.visitsouthsomerset.com/chard-reservoir)

Additional Accessible Walking Routes & Trails

We have a number of walks and routes that will enable you to explore our pretty market towns and villages including South Petherton, Ilminster, Bruton and Yeovil. These are available in print from our South Somerset Visitor Information Centre at Cartgate Picnic Site and to download from the Accessibility section in PLAN on the website.

 www.visitsouthsomerset.com

For even more ideas and inspiration, there's a wide range of accessible trails, routes and walks on the website below:

 www.accessiblecountryside.org.uk

Waterways

A wonderful way to see a different view of Somerset is on our inland waterways and just a very short distance from our South Somerset area in North Newton is the Somerset Boat Centre. They have a specially adapted wheelchair accessible boat for hire that comes with a skipper. Partial disabled access.

For more information about trips, hire and prices go to their website:

 07508 959 996/
07946 580 050

 www.somersetboatcentre.co.uk

5. Additional Information



Tourist Information Centres

With so much choice of where to stay, what to do and where to visit, our friendly and knowledgeable staff are on hand to help you plan a perfect day or relaxing holiday. Our award-winning South Somerset Visitor Information Centre & Gift Shop at Cartgate Picnic Site offers a fantastic range of Somerset brochures and leaflets as well as UK wide destination guides, books and OS maps. We proudly support more than 20 local Somerset and South West makers, businesses and producers, so you might just find a special keepsake to make your holiday last that little longer. We are able to copy leaflets in larger print, an induction hearing loop is available and there is level access.

5. Additional Information

Tourism for all UK

Tourism for All UK is the UK Voice for Accessible Tourism - a national charity dedicated to making tourism welcoming to all. If you would like more information on accessible tourism, please go to their website. You'll also find more helpful accessibility advice on the Visit England website.

 www.tourismforall.org.uk

 www.visitengland.com/plan-your-visit/access-all/accessible-england

South Somerset Map



Download a copy of the South Somerset map from our website or pick one up from our Tourist Information Centres.

 www.visitsouthsomerset.com

South Somerset Visitor Information Centre & Gift Shop



South Somerset Visitor Information Centre & Gift Shop

Cartgate Picnic Site, A303/A3088, Stoke sub Hamdon, TA14 6RA

For more information about this guide or visiting South Somerset, please contact us at:

 01935 829333

 VisitSS@Somerset.gov.uk

 [VisitSouthSomerset](https://www.facebook.com/VisitSouthSomerset)

 [VisitSSomerset](https://twitter.com/VisitSSomerset)

 [VisitSouthSomerset](https://www.instagram.com/VisitSouthSomerset)

 www.visitsouthsomerset.com



! **Disclaimer** – Every effort has been taken to produce this information with care and accuracy at the time of publication. However, Visit South Somerset does not accept any responsibility for the accuracy of the information provided, nor implies recommendation by the inclusion of content.