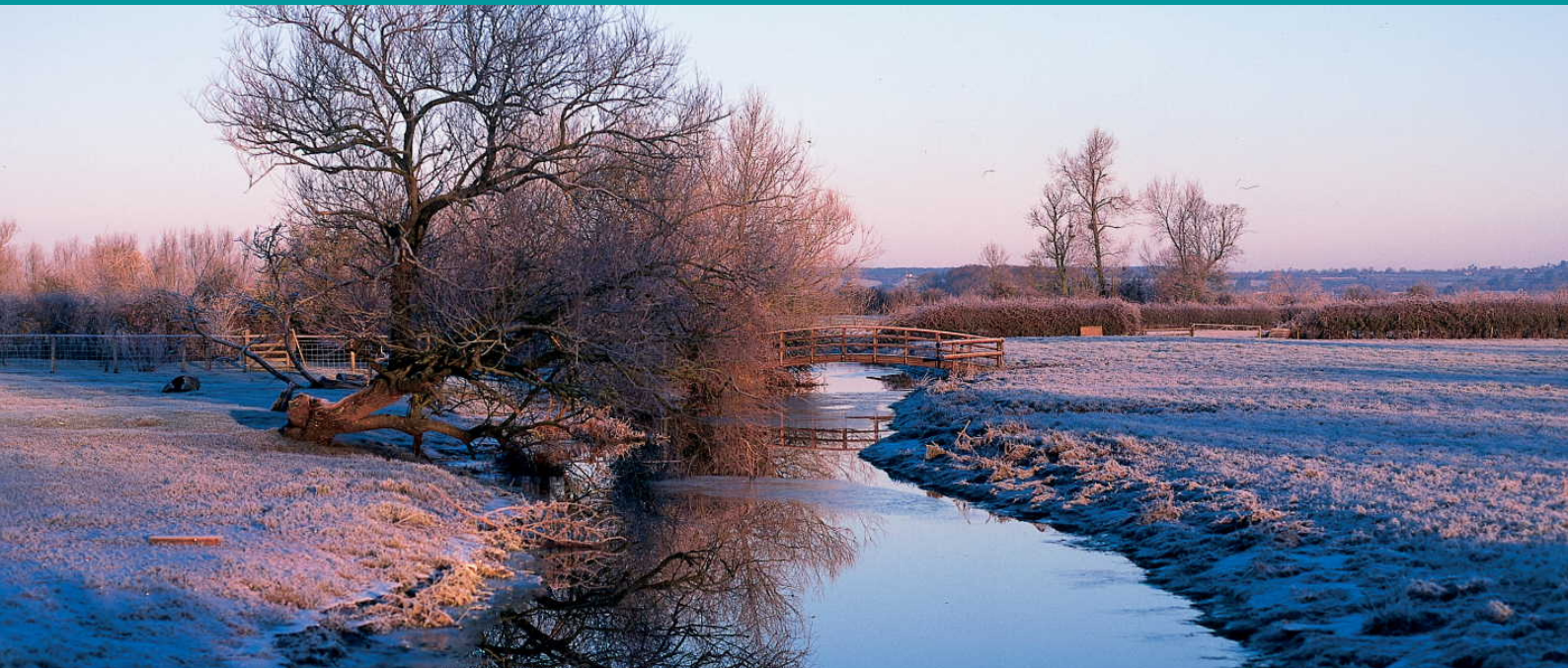


Relax & Recharge in South Somerset



Winter retreats here are rather magical and just the tonic to banish the blues.

Our spaces are perfect for hunkering down in the colder months at the start of the year; why not try a temptingly luxurious shepherds hut, boasting cedar hot tubs and toasty log burners to keep you snug as a bug.

With boutique hotels in Bruton, and cosy pubs with rooms in Hinton St George, Montacute, Somerton, South Petherton, Ilminster and Crewkerne to name but a few, you are spoilt for choice. If you are looking for a rural self-catering bolthole, then South Somerset has some absolute treasures, many with glorious views of the rolling countryside.

Discover more here: <https://www.visitsouthsomerset.com/listings/accommodation>





Explore the great outdoors

Think waterproofs, woollies and wellies. Enjoy timeless beauty and wake up to nature; catch your breath and take in that wholesome country air while discovering our award winning country parks at Ham Hill, Yeovil and Chard Reservoir.

Discover more here: <https://www.visitsouthsomerset.com/explore>

South Somerset and our bordering county neighbours boast a number of easy to reach National Trust and English Heritage sites, providing large open spaces where little ones (and old too!) can run free and find adventures in every nook and cranny.

Discover more here: <https://www.visitsouthsomerset.com/listings/gardens-and-historic-houses>

Be sure to pack comfy walking gear, as there are some fantastic routes on your doorstep, including The Leland Trail, The Liberty Trail, The Macmillan Way West and The River Parrett Trail – as well as shorter and local circular routes around the quaint villages and market towns.

Discover more here: <https://www.visitsouthsomerset.com/listings/walking>
<https://www.visitsouthsomerset.com/listings/market-towns-and-villages>

South Somerset is ideal for two wheels too – with the flat terrain of the Levels to meander and marvel at the landscapes, as well as more challenging hills nearby for the energetic. *Pedalling the Scenic Route* (free to download from our website, print available locally) offers some delightful trails for all abilities, taking in the Somerset Moors and starting in pretty Langport.

Discover more here: <https://www.visitsouthsomerset.com/listings/cycling>



Wet weather days

Many of our key attractions are open all year, including Haynes Motor Museum near Yeovil, a must for car enthusiasts and enjoyed by all ages too.

Experience the thrills and sounds of a working flight deck and even see a nuclear bomb at Fleet Air Arm Museum! You can go on-board the first British built Concorde and see the largest collection of Naval aircraft anywhere in Europe.

Heritage and history awaits in every corner; many of our towns have delightful local museums, arts and crafts centres, galleries, antique centres, independent stores and regular markets that will not disappoint. Love the theatre? Be sure to check out the latest shows at The Octagon Theatre and Westlands Entertainment Venue.

Discover more here: <https://www.visitsouthsomerset.com/listings/things-to-do>

Incredible local menus

Cheddar Cheese and cider are synonymous with Somerset but it does not stop there. South Somerset is attracting quite a foodie following and it is no surprise given the quality of the menus on offer.

Frogmary's Farm & Field Café in South Petherton is a local star that has emerged as a real crowd pleaser during lockdown, delivering a delicious breakfast to brunch menu and feasting nights too. Pip's Railway Carriage; Café, Bakery & Restaurant, just up the road in Lopen offers delightful daytime dining in a double decker bus or private train booths – only in Somerset!

Welcoming country pubs are in abundance serving gorgeous hearty grub and nothing beats the warmth of a roaring log fire after a wintry walk. There are newcomers in superb modern dining too, including Osip in Bruton, Holm in South Petherton and 28 Market Place in Somerton.

For more information about places to eat and drink, go to Section 6 in our Things to Do Guide: <https://heyzine.com/flip-book/c0611de405.html#page/1>



Book your South Somerset Winter Recharge!

For more ideas about where to stay, places to visit, eat and drink, please visit our website:
www.visitsouthsomerset.com

Download our handy free guides, Things to do, Dog friendly days out and Accessibility to make the most of your stay here: <https://www.visitsouthsomerset.com/downloads/top-tips>

Need more help?

In addition, our South Somerset Visitor Information Centre & Gift Shop at Cartgate Picnic Site is open year round and offers a warm welcome. Call in for free leaflets, brochures, guides, and a wide selection of OS Maps, together with a top tip or two

Open: Mon-Sat (Closed Weds) 9am – 3.30pm

South Somerset Visitor Information Centre & Gift Shop, Cartgate Picnic Site, A303/A3088, Stoke sub Hamdon TA14 6RA

T: 01935 829333 E: visit@southsomerset.gov.uk

Know before you go...

We still advise to check ahead via individual websites or to call and make sure your chosen places are open.



www.visitsouthsomerset.com



[VisitSouthSomerset](https://www.facebook.com/VisitSouthSomerset)



01935 829333



[VisitSSomerset](https://twitter.com/VisitSSomerset)



visit@southsomerset.gov.uk



[visitsouthsomerset](https://www.instagram.com/visitsouthsomerset)

South Somerset Visitor Information Centre, Cartgate Picnic Site A303/A3088, Stoke sub Hamdon TA14 6RA